

The PRO Slicer

A Polymer Clay Precision Slicer

GENERAL

The **PRO Slicer**, a Polymer Clay Precision Slicer, was designed to help the artist to accurately cut consistent thicknesses of polymer clay slices. A graduated drum allows for thickness control and repeatability. Slices are created by manually raising the slicing blade above the polymer clay cane or slab, advancing the table that supports the polymer clay, and lowering the blade to cut through the polymer clay. It's designed for minimal workspace requirements.

PARAMETERS

- Size – 7.13" width x 10.6" length x 10" height / 181mm width x 269mm length x 254mm height
- Weight - 5.6 lbs / 2.54 kg
- Work Area – 4" wide x 4" length x 4" height / 102mm wide x 102mm length x 102mm height

SAFETY

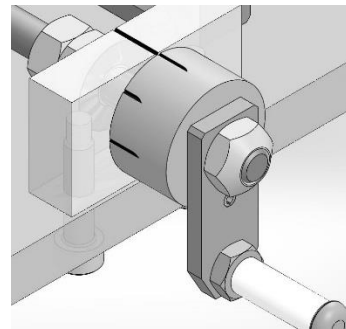
- The **PRO Slicer** is only to be used to slice polymer clay
- The underside of the Slicing Blade is extremely sharp
- Always keep the Blade Mount locked when the **PRO Slicer** is not in use
- Never place fingers under the blade while working with the **PRO Slicer**
- Do not use the Blade Mount to carry the **PRO Slicer**
- Keep the **PRO Slicer** out of reach of children

*Garbe Design Group Inc. is not liable for injuries or damages incurred by improper handling of the **PRO Slicer**.*

CRANK DRUM WITH MARKINGS FOR CUT THICKNESS

There are 8 equal markings in one (1) turn (revolution).

Marks = Size of Turn	Slice Thickness (INCHES)	Slice Thickness (MM)
1 = (1/8)	0.006	0.16
2 = (1/4)	0.012	0.32
3 = (3/8)	0.019	0.48
4 = (1/2)	0.025	0.64
5 = (5/8)	0.031	0.79
6 = (3/4)	0.038	0.95
7 = (7/8)	0.044	1.11
8 = (1)	0.050	1.27

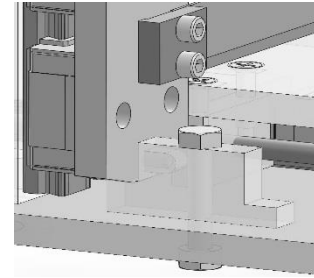


The PRO Slicer

A Polymer Clay Precision Slicer

INSTRUCTIONS FOR USE

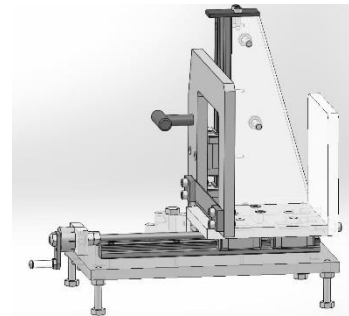
1. To use the **PRO Slicer**, place it with the crank facing you.
2. For safety, confirm Blade Mount is down and locked (see pic)



3. Turn the Crank Lever to create a working space between the Slicing Blade and the Back Stop.
4. Adhere clay to centre of Back Stop by pushing gently both to Cutting Surface and Back Stop

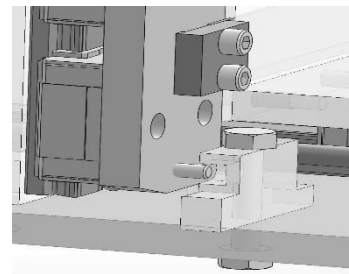
You may want to rotate the **PRO Slicer** lengthwise to easily access the Back Stop. (see pic)

NOTE: Unlocking causes the Slicing Blade to lower to the Cutting Surface
Never turn crank lever while Slicing Blade is in this position



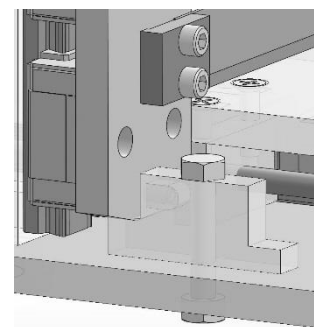
5. Rotate the **PRO Slicer** so Crank Lever is facing you again
6. Turn Crank Lever clockwise to advance the Cutting Surface until clay is near Slicing Blade
7. Turn Blade Slide Lock (see pic), 90 deg. counter clockwise to unlock

NOTE: Unlocking causes the Slicing Blade to lower to the Cutting Surface
Never turn crank lever while Slicing Blade is in this position



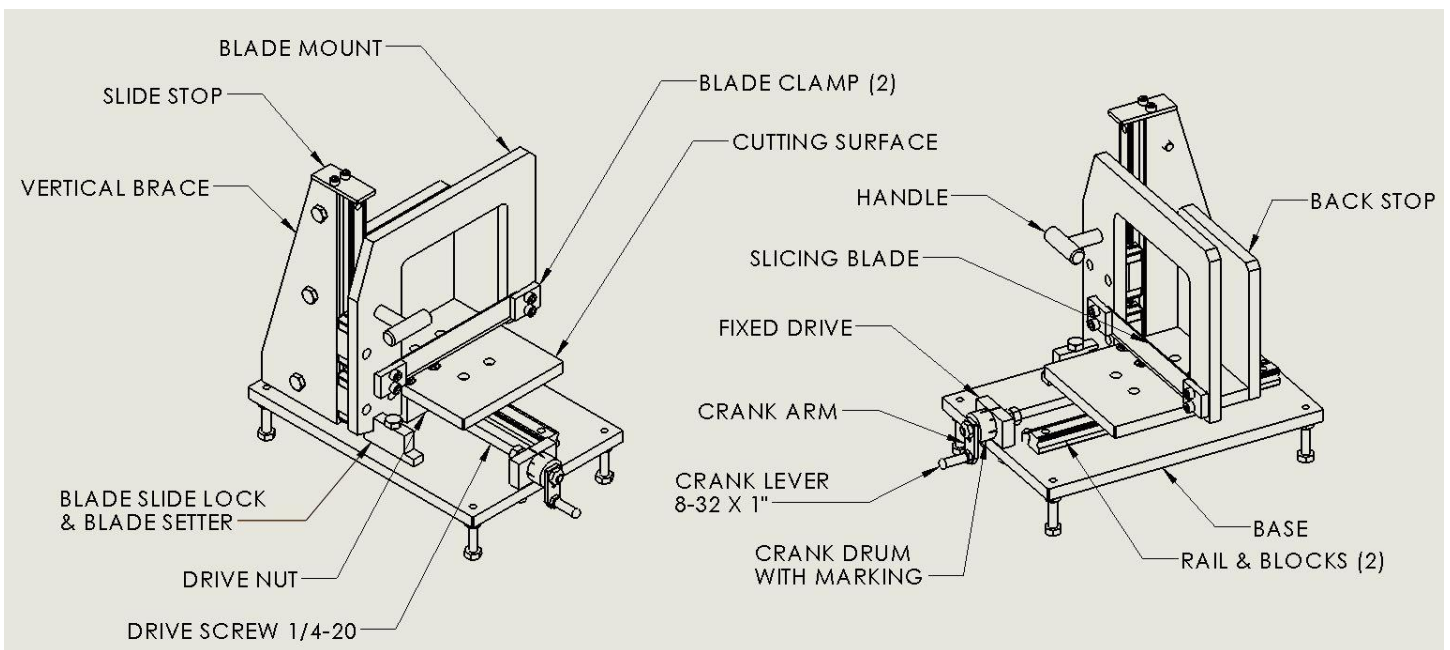
8. Grasp Handle, and raise the Slicing Blade above the height of the clay
9. Continue to turn Crank Lever until the front section of the clay is under the Slicing Blade
10. Push down slowly on Handle to cut an even slice
11. Keeping the Slicing Blade on Cutting Surface (safety!), remove slice from Cutting Surface
12. Lift Handle so Slicing Blade is above clay
13. Turn Crank Lever clockwise for desired cut thickness (see table Page 1)
14. Push down slowly on Handle
15. Remove slice from Cutting Surface
16. Repeat from Step 12 to 15 to continue making slices
17. When process is complete, lock Slicing Blade down

*** For safety, confirm Blade Mount is locked (see pic)



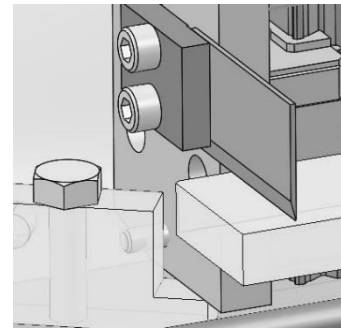
The PRO Slicer

A Polymer Clay Precision Slicer



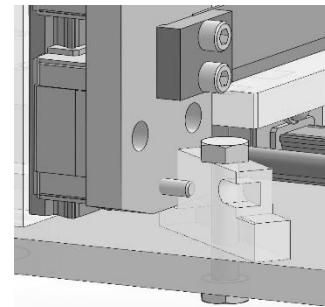
CHANGING BLADE (Be extremely careful to not touch the sharp edge of blade)

- Rest the Blade Mount on the Blade Setter (see pic)



- Using 5/32" Allen Wrench (Key - Included), loosen 4 screws of the Blade Clamps
- Carefully lift the Slicing Blade up and remove
- Place new sharp Slicing Blade between the Blade Clamps (see pic) with cutting angle facing forward

- Confirm that the Slicing Blade is sitting on Cutting Surface
- Tighten screws of Blade Clamp
- Lock Blade Mount by turning Blade Slide Lock counter clockwise



For Parts and Service contact Gail Garbe, ggarbe@niftystuffbygail.com

YouTube Demo available at <https://youtu.be/ttcw-mGQvlw>